

Freshman Abroad Program
Swinburne University of Technology
Melbourne, Australia

**SWIN
BUR
NE**

SWINBURNE
UNIVERSITY OF
TECHNOLOGY

Want to make a head start on your Freshman year at college?



international.swinburne.edu.au/study-abroad

Take a fresh look at your Freshman year

Swinburne University of Technology has a 100-year history of education and is rated five stars for teaching quality by graduates. We are ranked as one of Australia's leading teaching and research universities.

Freshman Abroad program

Our Freshman Abroad program is a unique opportunity for US College students to participate in a customised study abroad program. You will experience a 'campus and community lifestyle' in Melbourne and learn about Australia while gaining credit for your studies.

At Swinburne, we recognise the first year of college and university is important. Spending your first year of university in another country is an even greater step. Swinburne is small and student-focused; we are prepared in every way to welcome and nurture students from abroad.

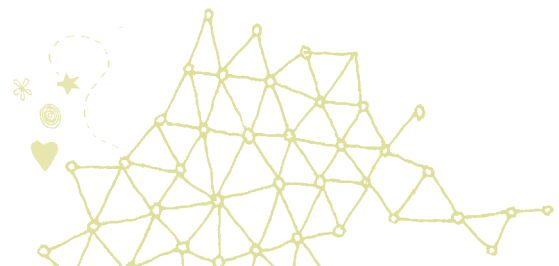
Our Freshman Abroad program aims to provide you with the opportunity to:

- Experience university life at Melbourne's best university for teaching quality*
- Undertake approved subjects of study for credit towards your "home" college degree
- Enhance cross-cultural and communication skills
- Gain an understanding of Australia's culture, history, natural and social environment

* *Good Universities Guide 2010*

Program inclusions

- Pre-trip services and support
- Orientation program
- Airport pickup and drop off in Melbourne and Sydney
- Accommodation on campus
- Health insurance
- Additional excursions and activities
- Arrival and Farewell function
- In-country support provided by Swinburne International
- Academic and Language Skills preparatory workshops
- Student Development and Counselling Services support sessions
- Swinburne Abroad Advisers
- 24/7 Swinburne emergency contact
- End of program certificate ceremony
- Official Swinburne transcript



Freshman Abroad study themes

Swinburne will run three concurrent academic streams as part of Freshman Abroad, each with its own unique theme(s). Under Australian visa regulations, you will be required to study a minimum of three and a maximum of four units.

All three streams will allow you the flexibility to study units outside of your stream on the same campus. Further information on course offerings can be found at:

www.swinburne.edu.au/courses

Please note that units outlined below are subject to change.

Stream 1 at Hawthorn campus

Business and Management: topics such as Accounting, Economics, Marketing, Human Resource Management.

Liberal Arts: topics such as Politics, Media, Sociology, Philosophy.

Engineering and Computer Studies: topics such as Chemistry, Biology, Engineering Maths and Biotechnology.

Highly recommended units include:

HAT110 Australia – A Global Context

This unit is designed to offer a concise introduction to Australia's history, politics and culture, with particular emphasis placed on examining Australia's changing place within the global community.

The course unit offers a basic overview of Australian history; discusses some of the key icons of Australian identity; and explores Australian politics, its issues, parties and personalities. Field trips are included.

HAM113 Professional Communication Practice

This is strongly encouraged for Freshman students for academic skills training in both technical and non-sciences fields. It is designed to equip you with oral and written communication skills you need to compete in the contemporary marketplaces. The unit is designed around three key areas: researching, writing and presenting.

BUSINESS AND MANAGEMENT

Swinburne units

Microeconomics (HBE110N)
Accounting for Managers (HBC110N)
Introduction to Business Law (HBL110N)
Fundamentals of Marketing (HBM110N)
Introduction to Entrepreneurship (HBN110N)
Introduction to New Venture Development (HBN210N)
Australian Global Business Perspectives (HBI241N)
Organisation and Management (HBH110N)
Foundations of International Business (HBI110N)

LIBERAL ARTS

Swinburne units

History of Ideas (HAH101)
The Media in Australia (HAM105)
Sociology 1B (HAS101)
International Politics (HAP117)
Introduction to Philosophy (HAH100)
Critical Thinking (HAH103)
Australian Politics (HAP100)
Writing Fiction (HAL103)
Intercultural Communications (HAC213)
Statistics and Research Methods (HMA103)
Introductory Law (HBSL100)
Health Policy and Planning (HES1716)

ENGINEERING AND COMPUTER STUDIES

Swinburne units

Engineering Maths (HMS111)
Chemistry 1 (HES1510)
Foundation Maths (HMS101)
Concepts of Biology (HES1610)
Digital Electronics Design (HET202)
Sustainable Design (HES1115)
Mechanics of Structures (UHT1125)
Introduction to Programming (HIT2080)
LAN Principles (HET104)
Energy and Motion (HET124)
Introduction to Electronics (HET182)

Our alumni told us they love Hawthorn because ...

'The train station is practically on campus. There's a tram line too.'

'It's set amongst cafes, banks, boutiques, bookshops, retail shops, supermarkets, patisseries, restaurants and everything you need.'

'This campus is so lively. It's friendly and a fun place to be.'

Hawthorn

- 14,500 students
- 8 km from the city
- 10-15 minutes by train

Stream 2 at Lilydale campus

Culture and Communications: topics such as Aboriginal Studies, Tourism, Journalism, Public Relations.

Highly recommended units include:

LIN100: Aboriginal Australia: Victorian People, Places and Experiences
Indigenous issues in Australia continue to be at the centre of public discussions concerning our national identity and history, as well as our political, legal, health and education systems. This unit aims to provide students with an understanding of Australia's Indigenous peoples and the issues that define their experiences as Australian citizens. Field trips are included.



Stream 3 at Prahran campus

Film, Television and Design: topics such as Communication Design, Interior Design, Industrial Design, Multimedia Design, Scriptwriting and Directing Narrative film, Production techniques.

Entry requirements

Students selecting design or communications units will need to have completed a High School equivalent course unit in art, design or media. Units with these requirements are marked with an asterisk (*).



COMMUNICATIONS AND CULTURE

Swinburne units

Aboriginal Australia: Victorian People, Places and Experiences (LIN100)
Professional Communication Practice (LPR100)
Introduction to Media (LSM102)
Cultural Perspectives on Science and Technology (LSM101)
Learning and Communication Behaviour (LCL100)
Introduction to Tourism (LTT100)
Marketing Concepts (LBM100)
Introduction to Sociology (LSS100)
Introduction to Management (LTE100)
Psychology 101 (LSY101)
Microeconomics (LBE100)
Accounting 1 (LBC 100)
Statistics and Research Methods (LCR100)
Information Systems Fundamentals (LAI100)
Introduction to Commercial Law (LBL100)
eCommerce Fundamentals (LEB105)



Lilydale

- 1900 students
- 40 km from city
- 50–60 mins by train

Our alumni told us they love Lilydale because ...
‘The campus is in a beautiful setting; green and natural.’
‘It’s easy meeting other students and making friends with locals.’
‘It’s in the Yarra Valley – famous for its wineries and wildlife sanctuary.’

FILM, TELEVISION AND DESIGN

Swinburne units

* Introduction to Communication Design (HDCOM111)
* Form and Structure for Communication Design (HDCOM121)
* Photography in Communication Design (HDCOM122)
* Design Thinking (HDC011)
* 20th Century Design (HDC001)
* 2D Animation (HDMMD111)
* 2D Character Animation (HDMMD122)
* Imaging for Storyboard and Narration (HDMMD112)
* Interactive Design for Web Technology (HDMMD121)
* Interior Design Construction Technology (HDINT121)
* Contemporary Interior Design Theory (HDINT122)
Australian Film and Television History (HDFTV002)
Race, Class and Gender In Hollywood Cinema (HDFTV003)
Film Screening Series: Contemporary Cinema/ Melbourne International Film Festival (HDFTV122)
Scriptwriting and Directing Narrative Film (HDFTV111)
Production Management/Sound Design (HDFTV123)
Documentary Production (HDFTV121)



Prahran

- 2000 students
- 6 km from the city
- 10 minutes by train

Our alumni told us they love Prahran because ...
‘The train station is around the corner. Easy to find. Trams run past campus.’
‘Everyone knows Chapel Street – it’s famous for its restaurants, shops, cafes and so much to see.’
‘Definitely a vibrant and cool place to study.’

Program details

The program runs from late July to late November ensuring you can return home in time to enrol for spring semester.

You will participate in an orientation at Swinburne, including an off-campus orientation retreat prior to the commencement of classes. Classes run for 12 weeks – not including exam period. Program costs will cover an accommodation period of 18 weeks.

Location

Swinburne University of Technology has five campuses around the inner and eastern suburbs of Melbourne, Australia. The Freshman Abroad Program is available at the Hawthorn, Lilydale and Prahran campuses. Each campus is a lively student community with its own character and range of specialised courses and services.

All Freshman Abroad students will be guaranteed on-campus accommodation.

Students studying Academic Streams 1 and 3 will live on campus in Hawthorn.

Students choosing Academic Stream 2 offered at the Lilydale campus will be accommodated at Lilydale Student Village.

HAWTHORN

Accommodation at the Hawthorn campus will be at the Swinburne Place Apartments (UniLodge) which is within easy walking distance to public transportation. Students studying at the Prahran campus will travel by tram or train from the Hawthorn campus to the Prahran campus. The tram or train will take approximately 30 minutes.

Swinburne Place Apartments offer three or four bedroom apartments. All apartments are stylish, modern, fully furnished and contain a private bedroom, bathroom, and fully equipped kitchen with an open-plan living and dining area. Swinburne Place Apartments also include a common room with a pool table, lounge area, large flat-screen television, laundry facilities, and outdoor BBQ.

A basic linen pack (sheets, pillow and one blanket) and utilities (gas, water, electricity, line rental, voicemail) are included.

LILYDALE

The modern, purpose-built Student Village comprises four or five bedroom apartments that include a kitchen and a lounge room. Each apartment is fully furnished containing kitchen/dining and living room furniture, beds, desks, chairs and wardrobes. The Student Village has a common room with a pool table, lounge area, large flat-screen television, public phone, laundry facilities, and outdoor BBQ. The Village also offers a wireless internet service. Students must purchase their pre-paid data and top up on a pay-as-you-go basis.

The Village is located on campus and is a short walk from the academic buildings, leisure facilities and public transport connections. It is walking distance to the Lilydale train station, supermarket, local shops and a one hour train ride to Melbourne's city centre.

Freshman student support services

Additional student support will be provided to ensure that you will experience a smooth transition to university life. Support includes:

- Online pre-departure orientation
- A tailored three-day Freshman Abroad orientation program
- On-campus Swinburne Welcome orientation program
- Free airport reception and transfers to your pre-arranged housing
- Guaranteed on-campus accommodation
- Dedicated advisers who understand the needs of study abroad students from the US
- An Academic Success Program that includes workshops prepared by Language and Academic Skills Advisers and Student Development and Counselling Advisers. Workshop topics include:
 - What to expect as a student at university
 - Australian language and culture
 - Presentation skills
 - Reading and writing skills
 - Computing and research skills
 - Mathematics and statistics support
 - Time management
 - Exam preparation

Application details

Students will need to complete the Swinburne Freshman Abroad application form. This can be downloaded from www.international.swinburne.edu.au/studyabroad

Applications can be emailed to aeadmissions@swin.edu.au

Applications close on 1 May.

Questions?

For more information, email studyabroad@swin.edu.au or visit

international.swinburne.edu.au/study-abroad

Swinburne International
Swinburne Place West
Level 1
20 Wakefield Street
Hawthorn Victoria 3122
Australia

Telephone: +61 3 8676 7002
Facsimile: +61 3 9818 3648

CRICOS Provider number 00111D

Swinburne University of Technology (Swinburne) has used all reasonable endeavours to ensure the information contained in this document was correct and current at the time of publication, October 2009. Swinburne accepts no responsibility for any error, omission or defect herein. Any information contained in this publication is subject to change from time to time without notice. You are advised to reconcile the accuracy and currency of the information provided with Swinburne Abroad before acting upon or in consideration of the information. Alternatively you may like to refer to the website www.international.swinburne.edu.au/study-abroad

SP1297-19-1009